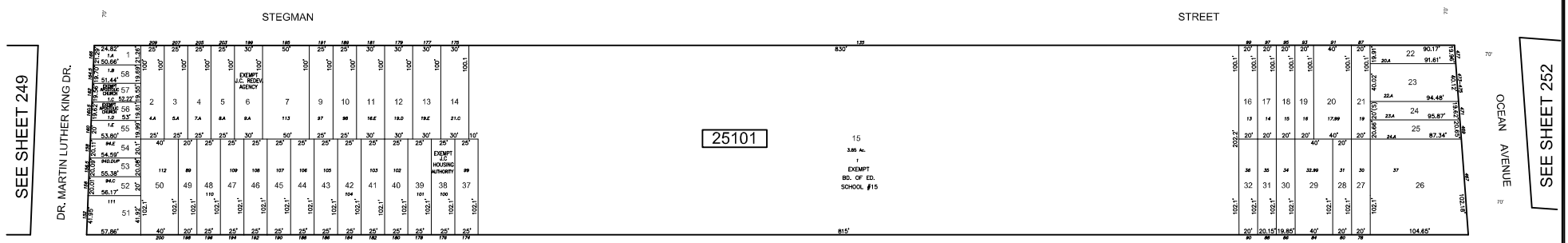
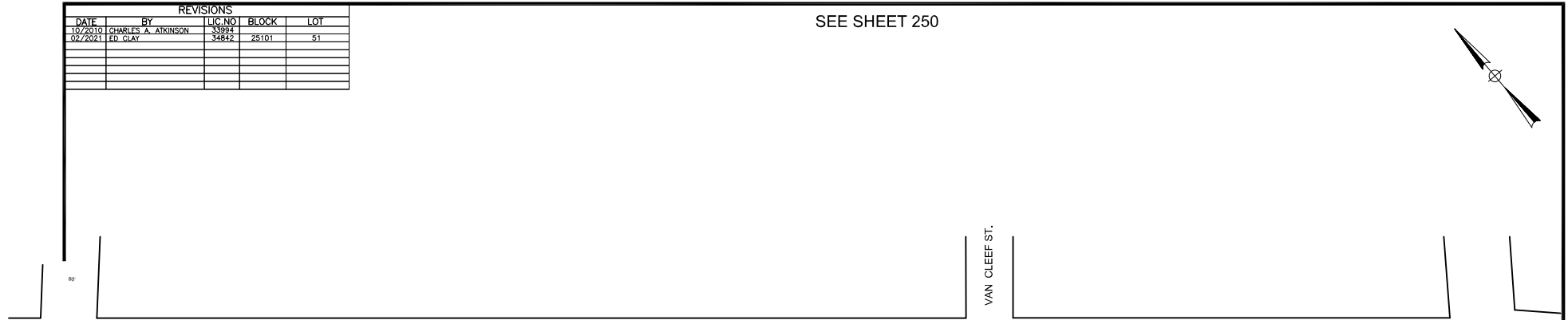
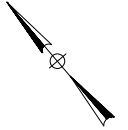


REVISIONS				
DATE	BY	LIC. NO.	BLOCK	LOT
10/2010	CHARLES A. ATKINSON	839941		
02/2021	ED. CLAY	32842	25101	51

SEE SHEET 250



SEE SHEET 249

DR. MARTIN LUTHER KING DR.

SEE SHEET 252



SEE SHEET 256

SEE SHEET 257

SEE SHEET 258

<p>THIS MAP HAS BEEN GIVEN A FORMAL CERTIFICATION BY THE DIVISION OF TAXATION ON MAY, 2009, SIGNED BY SANTO C. DIDONATO, CTA AND ASSIGNED SERIAL NUMBER 959</p>	<p>TAX MAP CITY OF JERSEY CITY HUDSON COUNTY, NEW JERSEY SCALE: 1"=50' AUGUST, 2008 RICHARD A. MORALLE, P.E., P.L.S. T & M ASSOCIATES 11 TINDALL ROAD, MIDDLETOWN TOWNSHIP NEW JERSEY, 07748 <small>TO SHOW CONDITIONS AS OF FEBRUARY 2021</small></p>
---	--

ARH -- COA#24GA27973300